

## Schools Districts Served

The following list of school districts are currently serviced by GCMRDD:

Cambridge City Schools

Rolling Hills Local School District

East Guernsey Local School District

Noble Local School District

Caldwell Exempted Village

Newcomerstown Exempted Village



## **Staff:**

### GCBMRDD:

Kelley Brown, Superintendent

Marsha Muhr, Superintendent's Secretary

Cathy Williams, Children's Director

Bonita Tainter, HR Director

Stephanie Neuhart, Business Manager

Kathy Finley, Fiscal Officer

Bill Cunningham, Transportation Director

Heather Parsons, Administrative Secretary

Susan Lenhart, Instructor

Christie Shelton, Classroom Aide

### Early Intervention:

Cathy Williams, Children's Director

Heather Parsons, Administrative Secretary

Angie Gray, Early Invention Specialist

Joe Rosen, Early Intervention Specialist

Karen Wiggins, Early Invention Specialist

### Therapies are provided by:

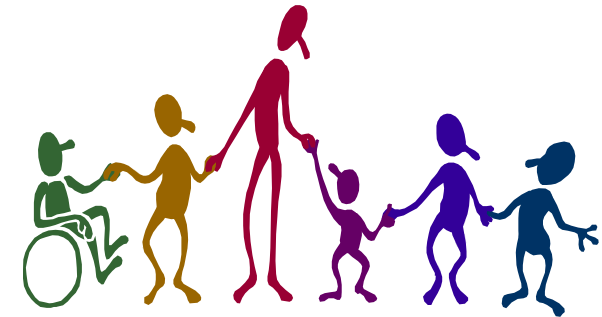
Vicki Eckleberry-Krahl, Speech/Language

Brenda Linger, Physical Therapy

Rachel Milner Occupational Therapy

# **GOLDEN RULE SCHOOL**

**60770 Southgate Road  
Byesville, Ohio 43723  
(740) 439-4451**



## **MISSION STATEMENT**

The Mission of the Guernsey County Board of Mental Retardation and Developmental Disabilities is to

**ENSURE** quality services that

**ENHANCE** the lives of individuals through

**EFFECTIVE** use of available resources.

## Golden Rule School



## What We Do

We provide education that focuses on each individual child's particular needs to help them meet their potential

All children have an Individualized Education Plan (IEP) which includes goals set by the parents, school district rep, and school officials



## Who We Serve

The school age program serves ages 7-22, A Bright Beginnings preschool is housed here, they provide services for ages 3-6.

## About the Golden Rule School

- \* At the GRS we provide and education, vocational training, and therapeutic services to children 3-22.
- These children have multiple disabilities or are considered medically fragile and require an environment that is more restrictive than a public school setting
- Local school districts place their students in this school placement because it offers intense educational opportunities, physical therapy, occupational therapy, and speech therapy for students facing multiple challenges including behavioral issues, blindness, autism, and mobility issues

## Services Provided:

- \* Nursing
- \* Service and Support Administration
  - \* Family Resources Support
- \* Adaptive Equipment Assistance
  - \* Transportation

Therapies offered:

- \* Occupational Therapy
- \* Physical Therapy
- \* Speech Therapy



## Activities We Participate In:

- \* Coats for Kids
- \* Special Olympics
  - \* Fall Fest
- \* Christmas Program
- \* Halloween Trick or Treat
- \* Formal Graduation Program when reaching 22