

Golden Rule School



- At the GRS we provide an education, vocational training, and therapeutic services to those 3-22 years of age. Preschool serves children 3-6 and the school age classroom serves ages 6-22.
- These children have multiple disabilities or are considered medically fragile and require an environment that is more restrictive than a public school setting.
- Local school districts place their students in this school placement because it offers intense educational opportunities, physical therapy, occupational therapy, and speech therapy for students facing multiple challenges including behavioral issues, blindness, autism, and mobility issue.

Help Me Grow

- Services are offered to pregnant women and children birth-3 years free of charge.
- Service Coordinators complete Mommy and Me visits shortly after the birth of their new baby. We can weigh the baby, answer questions about development, breast feeding, preparing formula, etc and talk about ways Mommy can take care of herself.
- Other services provided by HMG Service Coordinator include family support, referrals to community agencies, transportation, budgeting, parenting education, child development education, health & nutrition information, play groups, parent support groups, service coordination, and transition to preschool.
- Children do not need to be delayed or have a medical condition to qualify for services.



Early Intervention



- Early Intervention Specialist are trained professionals who use developmentally appropriate practices to help children meet their potential.
- EIS have an education in child development and experience working with infants, toddlers, and their families.
- EIS make home visits convenient to the family.
- They engage you and your child in play using developmental toys and items around your home to encourage your child to reach developmental goals that you help establish.
- We offer Speech/Language therapy, Occupational therapy, and Physical therapy if a child meets criteria.
- Developmental progress updates every three months.
- Services are offered at no cost.
- EI during the first few years of life can really make a difference in preparing a child for school.



If you know someone who you think should be referred to or could benefit from one of our programs please call:
(740) 439-4451

All referrals are confidential



Mission Statement

Ensure quality services that
Enhance the lives of individuals through
Effective use of available resources

*

Staff:

Guernsey County Board of Developmental Disabilities

Kellie Brown, Superintendent
Marsha Muhr, Superintendent Secretary
Cindy Brenning, Director of Children's Programs
Stephanie Neuhart, Business Manager
Kathy Finley, Fiscal Officer
Bonita Tainter, HR Manager
Steve Bush, Transportation Director
Heather Parsons, Administrative Secretary
Tanya Hitchens, Medicaid/SSA Director
Ken Harper, Adult Service Director

Early Intervention:

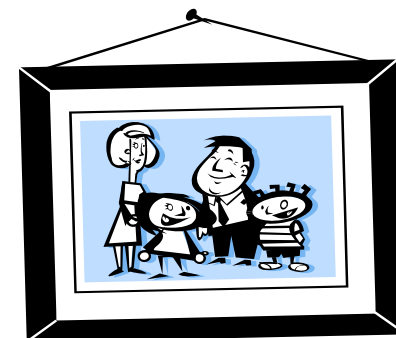
Cindy Brenning, Director
Heather Parsons, Administrative Secretary
Joe Rosen, Early Intervention Specialist
Kelley Burkhart, Early Intervention Specialist

Help Me Grow:

Cindy Brenning, Project Director
Heather Parsons, Administrative Secretary
Kellie Engstrom, Service Coordinator
Deana Palmer, Service Coordinator
Kaylea Hupp, Service Coordinator
Staci Yakupcak, Service Coordinator

Therapies are provided :

Speech/Language/Swallowing/Feeding
PT and OT by SEORMC



Guernsey County Board of Developmental Disabilities

The mission of the GCBDD is to ensure the availability of programs, services, and supports that assist eligible individuals with mental retardation and other developmental disabilities in choosing and achieving a life of increasing capability so that they can live, work, and recreate in the community, and to assist and support the families of these individuals in achieving these objectives.

60770 Southgate Road
Byesville, OH 43723
(740) 439-4451 (Phone)
(740) 439-7114 (Fax)

Visit our website:
www.guernseycountydd.org